



Manaaki
Kaimai
Mamaku

Annual Report 2022



Contents

From our Co-chairs	3	Future Projects	25
About Us	5	Our Team	26
From our CEO	6	Financials	28
Kaimai Mamaku Forum	7	Our Supporters	30
Key Activities	11		
KMRP Handover Ceremony	13		
Conservation	14		
Kaimai Mamaku Restoration Whānau	16		
- Ngāti Tumutumu	17		
- Te Maire	18		
- Te Kapu O Waitaha	19		
- Te Whakamaru o Horohoro	20		
- Wairere Mahi	21		
- Kaimai Kaponga	22		
- Kaimai Kauri	23		
- Ngā Mata Hiringa	24		



From our Co-chairs



Ko lhowā, te matapūtahi, te mātāpuna, nōna te oranga nui, nōna oranga tonutanga.

I ngōna whakaipoipohanga.

Tuia te rangi e tū nei, Tuia te papa e takoto nei, tuia te aroha ki te hunga kua māwehe atu i te ao tūroa nei.

Kua puta kē a Matariki me ngōna tohu, arā, ngā mahartanga o te tau, ko ngā tūmanako mō te tau.

Nā kōnei ka mihi ake ki a tātou e oke ururoatia ana, e ringa raupā ana, kia whakahokia atu te mauri ki te Kaimai, Mamaku, arā, kia makuru, kia rea, kia matomato te tupu i te Wao tapu nui.

Mauri ora ki te nuku, Mauri ora ki te rangi, Mauri ora ki te whaiao ki te ao tūroa.

As co-chairs of the Manaaki Kaimai Mamaku Trust, we celebrate together the mahi of those who have led us to the present. We now can celebrate the actions of today that are enabling iwi-hapū to work in the ngahere of the Kaimai Mamaku to restore the whenua and restore the mauri. We acknowledge and express gratitude on behalf of the Trust and the iwi-hapū projects for the Jobs for Nature funding that has supported this work.

Over the past year, the Trustees have continued to work cohesively and this has seen rapid progress made on all fronts. In the past year, two Trustees, Phil Samuel and Nick Dykzuel, have left our Board. Phil's knowledge

and wisdom was greatly valued. Nick established the Trust's financial reporting systems, giving confidence to our funders. The Board thanks Nick and Phil for their important contributions and we look forward to welcoming new Trustees to the kaupapa, building on the foundations we have set.

We wish to thank the Te Papa Atawhai for their work establishing the project, entrusting it to the care of our team, and continuing their support. The appointment of CEO Louise Saunders and two staff means the Trust is resourced with the people needed to continue the mission of restoring the mauri of the Kaimai Mamaku. Our team has established our organisational infrastructure, built strong relationships, and worked at pace to progress our strategy.

Te Papa Atawhai transferred control of funding and project to the Trust on the 1 April 2022, three months early, and this was celebrated at a moving ceremony during Matariki on 22 June 2022 at Wairere Falls.

Positive and productive relationships with Bay of Plenty Regional Council, Waikato Regional Council and Te Papa Atawhai continue to give us all insights into numerous work programs within the project area. This increases our ability to coordinate pest control and facilitate collaboration between agencies, teams and community groups.



From this solid foundation of mutual support and integration, we look forward to establishing lasting relationships with a wide range of funders to enable pest control to continue beyond the Jobs For Nature programme, and for Kaimai Mamaku restoration activities to expand in scope and area.

Over the past year, it has been most rewarding to hear reports from the funded projects of the benefits being realised. There is immense value in the creation of conservation jobs and training that enable the resourcing

of kaitiakitanga and reconnection of iwi-hapū to the whenua and the ngahere.

We are humbled to be part of an environmental restoration programme with such immense potential to contribute to the social and economic wellbeing of our communities as they collectively work towards resilient solutions for biodiversity loss and climate change. We commend the enabling work of the Trust and the

Kaimai Mamaku Restoration Project to you. With your collaboration, support and manaakitanga, we can achieve the vision *“The Kaimai Mamaku thrives; hence we thrive.”*



Mokoro Gillett & Norm Bruning



About Us

Strategic Direction and Focus

Setting a strategic direction is never easy. But communicating the urgency and complexity of a landscape-scale mission that requires a portfolio of solutions over generations is daunting. Fortunately, we had the benefit of the Forum's years of work which helped identify the action areas needed in the Jobs For Nature context. Our strategy is underpinned by the understanding that Jobs For Nature funding is temporary and, collectively, we will need to achieve a paradigm shift in conservation funding to achieve the vision.

Vision

The Kaimai Mamaku thrives; hence we thrive.

Mission

Restoring the mauri of the Kaimai Mamaku.

Objectives

Of the objectives set by the Kaimai Mamaku Forum, the Trust is focusing initially on:

- Coordinating action on ngahere & catchment health, focusing on pest control.
- Raising community awareness of the issues.
- Reigniting the Forum and Māori caucus/Ngā Iwi Tōpū as stakeholder voices.

Actions

To facilitate long term restoration projects coordinated and integrated across the entire Kaimai Mamaku landscape, we will:

- Communicate the restoration vision through engagement.
- Provide co-governed leadership to drive the mission.
- Enable, support and activate others for collective restoration action.
- Coordinate effective restoration at scale by providing data, information and resources.
- Secure enduring funding sources to support, integrate and extend restoration.

From our CEO

CEO Report

Our organisation, its kaupapa and its mahi comes from our history. For Manaaki Kaimai Mamaku Trust's first annual report and as its inaugural CEO, it is timely to reflect on our history, our whakapapa, and our future. Titiro whakamuri, kokiri whakamua. Look back and reflect, so you can move forward.

It is 13 years since stakeholders first came together to express concern about the declining health of the Kaimai Mamaku ngahere. That meeting resulted in formation of the Kaimai Mamaku Forum, a collective of stakeholders who agreed on a vision and mission, and prepared Strategic and Operational Plans. The Joint Agency Committee of the Department of Conservation, Bay of Plenty Regional Council and Waikato Regional Council was formed to coordinate agency pest control operations and support the Forum by commissioning a State of the Environment report and pest management discussion document. The Forum's iwi-hapū rōpū (group) formed the Māori caucus. In 2019, the Manaaki Kaimai Mamaku Trust was formed and in 2020 the Trust's structure was amended to provide for co-governance linked with the Māori caucus.

And then there was Covid.

The Government's Covid Response package included the Jobs For Nature programme. The business case put forward by the Māori caucus and Te Papa Atawhai for

the Kaimai Mamaku Restoration Project was successful, allocating \$19.4 million over four years. Te Papa Atawhai established the Transitional Governance Group to guide project establishment in anticipation of the Trust taking over fund administration.

I was the first employee and inaugural CEO of an organisation with a rich whanaungatanga. More than a simple timeline, the Trust's foundations include the vision and mission agreed by the Forum, the integration of agency operations, establishment of new pest control projects, and development of a complex network of relationships among people working towards the same restoration goals. I want to acknowledge the incredible work and contributions by so many; their mahi has provided the basis for confirming the Trust's strategy, objectives and actions. Overwhelmingly, the message remains 'it's time for action'.

This Annual Report summarises the Trust's actions and outcomes since I was appointed in September 2020. Our team of passionate Trustees and staff are committed to rapidly increasing momentum in three key action areas of engagement, information and restoration. We will also report on actions originally set in the Forum's Operational Plan, demonstrating the Trust's progression from 'establishment' to 'delivery' within the new context of Jobs For Nature funding. We also provide initial reporting against metrics that are the signals of progress, learning and success as we move forward.

Metrics aside though, the most profoundly satisfying moments for me have been seeing the determination and passion of people working on the Kaimai Mamaku restoration project. Thank you to all our Trustees, my team Dani and Meschka, and the kaimahi and kaitiaki. Some of you changed careers to be part of the mission, some want to "give back", some sought a job with a purpose, and all are relishing the learning on this incredible journey we've embarked on together.

The learning for me has been that reconnection with whānau and whenua is a powerful and positive driver of action, and that having a common kaupapa is bringing people together even when their perspectives are very different. The song of the kōkako, the fascination of fungi, the healing of rongoa... these things and more drive people towards the same outcome: a thriving forest. I'm convinced that integrating project mahi with the work of conservation volunteers, combined with the best pest control knowledge available, will tip the balance in our favour in the battle against pests and biodiversity decline: Whiria te tangata. Weave the people together.

Ngā manaakitanga / best wishes



Louise

Kaimai Mamaku Forum

The action items identified by the Forum as essential (Operational Plan 2017—2022) are reviewed in this Annual Report for completeness. Some of the tasks have been completed by others, some by the Kaimai Mamaku Restoration Project (KMRP) teams, and some by the Trust. We acknowledge the hard work and dedication of all collaborators and contributors as we make progress towards the vision.



Kaimai Mamaku Pest Management

- 1.1 Contract Pest Management Specialist
- 1.2 Establish a pest control working group
- 1.3 Collate and map information
- 1.4 Issues & Options Report
- 1.5 Shortlisted Options
- 1.6 Engagement on Options
- 1.7 Pest Management Plan
- 1.8 Plan Implementation

A pest management plan was completed in 2019 to identify an approach to landscape-scale pest control in the Kaimai Mamaku project area. Using that approach, each funded project has a pest control specialist and health & safety advisor to help develop a safe and effective operational plan. These plans will be reviewed regularly to refine methods and integrate with adjacent projects and agency activities. In the coming year, we will continue to define and work towards filling pest control gaps across the rohe, including trialling new technologies and bringing new projects to implementation.





Projects that involve collaboration by connecting people and places

- 2.1 Continued engagement within potential corridors/networks
- 2.2 Continued engagement with tangata whenua
- 2.3 Engagement with landowners adjacent to Kaimai Mamaku Ranges
- 2.4 Identify potential corridors/networks
- 2.5 Connect people and projects within potential corridors/networks.

The Jobs For Nature programme supports our co-governed Trust which includes Māori Trustees representing mana whenua nominated by the Māori Caucus. The development of iwi-hapū capability and capacity in conservation projects has led to eight new projects progressing to pest control implementation. In the coming year, along with more projects, there will be increased focus on adjacent landowners (particularly in the Waikato) and restoration corridors.



Showcase the Kaimai Mamaku Ranges and Forum

- 3.1 Connect local communities
- 3.2 Share information regionally and nationally
- 3.3 Annual presentation to elected members
- 3.4 Biennial Forum Symposium
- 3.5 Greater visual recognition

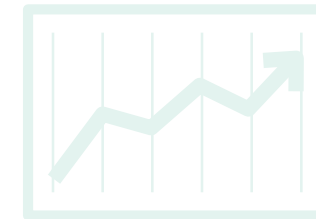
The Trust's focus in 2021-22 has been on establishing our team, engagement channels, and completing the transition of the Jobs For Nature projects to management by the Trust. Presentations on the KMRP have been made to councils, conservation boards, community groups, stakeholders, and working groups at regional and national levels to raise awareness of the project's scale, scope and outcomes. The Forum re-launch was held and further Forum events are planned. The coming year will see this work continue, notably through the launch of a dedicated engagement platform, Kaimai Mamaku Kōrero (see page 9, Enabling Action 1), and visual recognition through signage and interpretation materials.



Information Collation and Mapping

- I1 Collate information
- I2 Map information
- I3 Update/overhaul website
- I4 Online dashboard
- I5 Continue updating website

A GIS database has been created along with bespoke apps for efficient data input and a dashboard showing real time progress against key metrics. The Trust website has been overhauled to provide updated information on the Trust, its strategy, and our team. New pages now provide a summary of the Forum and Trust history, and the natural resources and biodiversity of the Kaimai Mamaku area. In the coming year, the online engagement platform, Kaimai Mamaku Kōrero, will provide a portal for projects, collaboration, research and outcomes, allowing responsive and dynamic engagement across the entire Kaimai Mamaku project area.

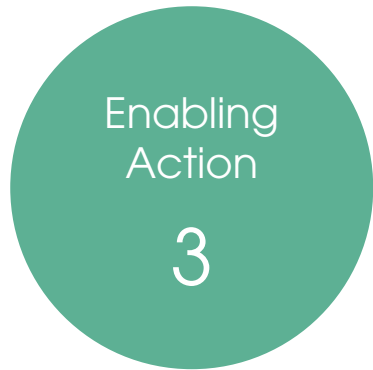


Research and Monitoring

- R1 Integrated monitoring programme
- R2 Cultural health indicators
- R3 Partnerships with others
- R4 Support research and monitoring by others
- R5 Updated SOE report

The significant increase in project mahi alongside volunteer groups and agency operations means that an integrated monitoring programme is essential to identifying progress towards the vision. This is a project for the coming year, through the work of the Joint Agency Committee Monitoring Working Group. Also in the coming year, advisors will help funded projects develop monitoring methods relevant to their project scope and collect data to contribute to a project-wide database. The GIS database will be used to identify data gaps and refinements to monitoring to allow robust analysis, leading in turn to precision application of pest control and biodiversity management tools.

In the coming year, an integrated monitoring programme with biological success metrics will be developed. Importantly, cultural and social outcomes are of equal importance to achieving the vision and will be included. Significant increases in restoration action and monitoring are now occurring, so a State of the Environment will add value from 2026 onwards when changes in biotic trends can be established.



Enabling
Action

3



Enabling
Action

4



Communications, Coordination and Resourcing

- C1 Forum mailing list
- C2 Keep Forum members up to date
- C3 Forum Coordinator role
- C4 Funding calendar
- C5 Funding options

The Forum mailing list has been updated and extended, the newsletter re-established, and social media channels set up for regular and consistent communications. Feedback on this has been very positive with active engagement across all channels. Our Restoration Projects Coordinator and Engagement Facilitator have taken on and extended the role envisaged for the Forum Coordinator. In the coming year, the Trust will engage with funders to determine how the Kaimai Mamaku Restoration Project can be resourced and extended when the Jobs for Nature programme ceases.

Strategic Planning and Influence

- S1 Forum Steering Group
- S2 Review Terms of Reference
- S3 Identify ways to raise profile and influence
- S4 Forum input/submissions
- S5 Capacity building

The intent and influence of the Steering Group has, to a large extent, been superseded by the Trust and its operations. However, there remains a critically important role for Forum members to leverage the power of their influence and networks to progress the Kaimai Mamaku mission. In the coming year, the Trust will be engaging with Forum members to create a clear pathway for making their contribution and maximising their impact.



Key Activities

Engagement

Over the past year, the Trust's engagement and communication activity has blossomed! We are fortunate to have had the assistance of DOC's Kaimai Mamaku project team, especially communications advisor, Max Yeager. We've established four social media channels, reignited the Forum newsletter, updated the website, and captured photographs and videography of our project teams and the environments they are working in.

DOC and MKMT worked together to re-launch the Forum in February 2022, which brought together a fantastic panel of speakers with MC Tame Malcolm. Thank you all those who assisted and participated in delivering this keystone event. The support for and interest in the Kaimai Mamaku kaupapa has been reflected in the rapid increase in following and engagement across all the Trust's communications and those of our project teams.

In the coming year, our objective is to increase our audience, particularly in the Waikato, and transition them from engagement to action.

In May, we kicked off the inaugural Kiwi survey, calling on the community to listen for a species that was once common throughout the Kaimai-Mamaku forests and margins. This will become an annual 'citizen science' event. Unfortunately project team participation was foiled by the weather despite numerous attempts, but the teams are looking forward to adding their ears to the survey next year.

We have also completed a baseline survey gauging community awareness of Jobs For Nature, the Kaimai Mamaku Restoration Project and the Trust. Repeating this in future will help us understand how effective our communications and engagement are at raising community awareness of the issues and the solutions.

Information

The Kaimai Mamaku project area is large... very large! Almost 300,000ha of forests and catchments that support communities, businesses, agriculture, horticulture, recreation, and fisheries. There are numerous people,

groups, and project teams working on restoration projects but often in isolation from one another. Like jigsaw puzzle pieces scattered across the floor, we can have more impact if we have a shared vision to work towards. Information is the key, showing everyone where action is happening, encouraging collaboration, and sharing knowledge.

This year we have developed MKMT's GIS database which was launched in February 2022. This tool remains in its infancy while the project teams upskill, data layers are added, and metrics are refined. In the coming year, the GIS database will become a powerful tool showing exactly what restoration action is happening where. It will provide a gauge on outcomes across the key metrics of conservation, biosecurity, employment and volunteer effort, and Health & Safety.



Collaboration

No single agency, project, group or person can achieve the project vision of a thriving Kaimai Mamaku. A significant success factor for the Kaimai Mamaku Restoration Project and a key objective of the Trust is collaboration, which has been achieved in many ways over the past year.

We would like to particularly acknowledge the collaboration of the DOC team who worked tirelessly to provide a smooth transition and knowledge transfer for the Kaimai Mamaku Restoration Project. Lucas MacDonald, Shul Gordon, Jeff Milham, Brad Angus and the Tauranga, Rotorua and Te Aroha DOC teams have gone above and beyond with project teams and the Trust to provide technical support and activate new projects.

The Trust works with BOPRC, WRC and DOC on the Joint Agency Committee (JAC), coordinating pest control and related activities from a combined agency fund. By identifying needs at a landscape scale, this team has been able to direct funds into tasks such as increasing goat control across the project area and trapping to protect the Opuiaki kōkako population. The JAC also collaborates on monitoring programmes and information sharing, which will bear fruit in the coming year.

The project teams are also starting their collaboration journey, working with one another, agencies and the Trust on training, engaging with community conservation and care groups, and sharing the value

of mātauranga for restoration. This collaboration was celebrated at the Kaimai Mamaku handover ceremony held on June 22, during Matariki. Against the beautiful backdrop of Wairere Falls with stunning weather, we came together to recognise Te Papa Atawhai entrusting the Kaimai Mamaku Restoration Project to the Trust, sealed with the exchange of a waka huia. This step brings to fruition the intention of the Forum to ensure that the Kaimai Mamaku restoration is led by the community, for the community.



KMRP Handover Ceremony

“We can use the strong foundations of partnership, shared knowledge and collective action to magnify the efforts of everyone. By bringing together our collective resources and influence, we will create a legacy that will endure for generations to come. All of you here today have a role to play in supporting this significant Kaupapa. I ask you to extend, through each of your organisations, the manaakitanga needed to make this project a success. We are, collectively, creating a future for the forest while creating a future for people.”

Louise Saunders



Conservation

In July 2021, there were three Kaimai Mamaku conservation projects being planned, of which two completed the Stage 1 planning process and successfully applied for Stage 2 funding for project delivery.

Momentum built quickly with a further five Stage 1 scoping projects being funded, and all five progressing successfully to funding for Stage 2 project delivery.

One project team went straight into Stage 2 project delivery, so the Kaimai Mamaku Restoration Project finished the year with eight operational projects and two projects in Stage 1 planning.

Funded Projects	2020-2021	Jul-Sep 2021	Oct-Dec 2021	Jan-Mar 2022	Apr-Jun 2022	Jul-Sep 2022
Stage 1: Ngāti Tura Ngāti te Ngakau project scoping	✓	✓				
Stage 2: Ngāti Tura Ngāti te Ngakau project delivery – Kaimai Kaponga			✓	✓	✓	✓
Stage 1: Kaimai Kauri project scoping and ambassador programme	✓	✓	✓	✓		
Stage 2: Kaimai Kauri project delivery				✓	✓	✓
Stage 1: Ngāti Hinerangi project scoping			✓	✓	✓	
Stage 2: Ngāti Hinerangi project delivery – Wairere Mahi						✓
Stage 1: Ngamanawa project scoping		✓	✓	✓	✓	
Stage 2: Ngamanawa project delivery – Nga Mata Hiringa						✓
Stage 1: Ngāti Kearoa Ngāti Tuara project scoping		✓	✓			
Stage 2: Ngāti Kearoa Ngāti Tuara project delivery				✓	✓	✓
Stage 1: Ngāti Hako project scoping				✓	✓	✓
Stage 1: Ngāti Tumulumu project scoping			✓	✓		
Stage 2: Ngāti Tumulumu project delivery					✓	✓
Stage 1: Ngai Tamawhariua project scoping						
Stage 2: Ngai Tamawhariua project delivery – Te Maire					✓	✓
Stage 2: Waitaha project delivery – Otawa Waitaha a Hei					✓	✓
Stage 1: Tapuika project scoping						✓

The teams spent the early part of their Stage 2 programme training staff, building capability, and setting up pest control infrastructure (trap lines, traps/bait stations, monitoring, etc.) across their project areas. The coming year will see that work come to fruition with significantly increased hectares under control for an increasing range of pest species. Congratulations to the project teams on your incredible mahi; your collective contribution as part of the Kaimai Mamaku restoration whānau is inspirational.

Project support services

Each project is supported by specialist advisors to build capability in project management and administration, budget tracking, work planning, health & safety, pest control implementation, and GIS data capture. The goal is to assist the projects in becoming investment-ready for funders after the Jobs For Nature programme ceases.

The projects complete quarterly reporting on key deliverables and milestones including employment starts and hours, training, qualifications achieved, H&S metrics, engagement, and conservation outcomes. The Trust's team works closely with project managers on achieving long term vision for their project. Opportunities to share experiences and learning are proving to be a valuable outcome of joining the Kaimai Mamaku restoration whānau.



An aerial photograph of a dense, green forest covering rolling hills. In the center, there is a circular graphic element consisting of a dark green circle with white text inside, surrounded by a white, intricate, swirling pattern that resembles traditional Māori art. The background shows a clear blue sky with some light clouds.

Kaimai Mamaku Restoration Whānau



Ngāti Tumutumu

Iwi: Ngāti Tumutumu

Ngati Tumutumu will undertake targeted pest plant control which aims to restore the plants, birds and insects in the forest and thus the mauri in the Northern section of the Kaimai Ranges forest, namely in the Te Aroha area.

Location

A project area of 600ha in the North Western section of the Kaimai Ranges forest, namely in the Te Aroha area.

Summary

Ngati Tumutumu's current conservation efforts are based around removing pest plants from the western side of Mt Te Aroha and the on-going management and maintenance of these. Our long-term goal is to restore to Ngahere to what it previously was.

The Ngati Tumutumu Conservation Project is based on the western face of Mt Aroha and including the walking tracks around Waiorongomai Valley and across the summit of Mt Te Aroha.

Mt Te Aroha is sacred to not only Ngati Tumutumu but many surrounding iwi as well and the maunga is obviously an important part of the community as a whole and we feel this is important that we acknowledge this in the work we do. Also being able to provide an opportunity for whanau to return home and work on the maunga is hugely important for us.

This opportunity to have a lasting impact on the Ngahere is not lost on us and we want to create something sustainable for all our future generations.

Operational Work

- Undertaking pest plant surveillance from Te Aroha to Waiorongomai
- Engaging with our wider whanau educating about pest plant control and management
- Undertake ground-based control of pest plants within the project area including, but not limited to the following species:
 1. Wild Ginger
 2. Ivy
 3. Climbing Asparagus
 4. Japanese Honeysuckle
 5. Tradescantia
 6. Wilding Pines



7 kaimahi employed



Project Highlight

A significant highlight to date which is hugely important for us would be that we are able to provide employment opportunities for Ngati Tumutumu whanau members to return home to live and work in Te Aroha.

Other notable highlights include identifying numerous native trees, including kauri, across the rohe and knowing that removing the pest plants from them will provide more likelihood that they will survive and help regenerate the ngahere.

Follow our journey here

<https://www.facebook.com/tumutumukaitiakitaiiao>





Te Maire

Hapu: Ngai Tamawhariua

The Vision of Ngai Tamawhariua Ki Te Rereatukahia Hapu is to restore the sustainability of their ngahere for the benefits of all current and future generations to appreciate the natural beauty of the ngahere and all that lies within it.

Project Area

This project has an area of 500ha in the Southern Section of the Kaimai Ranges forest, namely in the Aongatete area.

Summary

This project is undertaking targeted pest control which aims to restore the plants, birds, bats and insects in the forest and thus the mauri in the southern section of the Kaimai Ranges Forest, namely in the Aongatete area. Restoring the mauri of the forest to maintain a healthy and functioning forest ecosystem, will at a minimum require controlling possums, rats, mustelids and cats to

low levels. Successful animal pest control will require investment in infrastructure including marked and cut tracks, traps and bait stations, a work-base and an operation base.

Operational Work

- Marking and Cutting Track lines over approx. 500ha land block
- Ground-based pest control targeting; Possums, Rats and Stoats over 500ha land block.
- Deploying and maintaining bait stations over 500ha block
- Hosting wananga to promote kaitiakitanga to our hapū that will increase the overall understanding and engagement of our whanau.



4 kaimahi employed

Project Highlights

1. Completed the set-up of a 500ha trap network which consists of ATT220s, BT200s, Bait stations and Cat traps.
2. Offering an opportunity for two Rangatahi from Ngai Tamawhariua to volunteer two days a week for two months; Whilst supporting their applications for the Bay Conservation Alliance Cadets – Tauria Mahi course to further upskill and provide meaningful work experience to enable a career path into the environmental sector. This will lead to employment opportunities for them both with Te Maire 2021.



Hear from our Kaumātua, Project Manager and Kaimahi

<https://youtu.be/zV1uwTrG2Pw>





Te Kapu O Waitaha

Iwi: Waitaha

Ka ora te Taiao, ka ora te tangata!

Summary

This project undertakes targeted pest control in the forest and thus the protection and preservation of mauri in the central section of the Otanewainuku-Otawa area. Waitaha's aspirations are for a sustainable future, avoiding harm to, or the diminishing of, the values of Waitaha and Ngā Tikanga o Waitaha in relation to Ottawa within the Ottawa Scenic Reserve. A good example of implementing Waitaha values has been the support by Te Kapu O Waitaha to the successful gazetting of Ottawa Sanctuary for the protection of the Ottawa Frog (Hotchstetter). Waitaha's values include, the connection of people, all living things and land. To maintain a healthy and functioning forest ecosystem, will require controlling possums, rats, and mustelids to low levels.

Project Area and Location

This project covers a 400ha land block in the central section of the Otanewainuku-Otawa area.

Operational Work

- Marking and cutting track lines over 400ha block of land in the Ottawa area
- Ground-based Pest Control targetting: Possums, rats, mustelids
- Promote Kaitiakitanga within Waitaha and wider community
- Collate and input operational data to a management system supported by MKMT.



2 kaimahi employed

Project Highlight

The reciprocity between te taiao and tangata, by that we mean with the health of the ngahere, we are seeing the health of our people transform, physically, mentally, and spiritually including, significant cultural connectivity ki Ottawa, unique to Waitaha whanau/kaitiaki.



Mātāmua ko te taiao, mātāmuri ko te tangata. Ko tā te tuakana mahi he manaaki i te teina, ko tā te teina mahi he rānaki i ngā mate o te tuakana. Te Kapu o Waitaha Taiao Team sharing their knowledge and passion for the taiao."





Te Whakamaru o Horohoro

Iwi: Ngāti Kea Ngāti Tuara

Our vision is the protection of the whole of Horohoro including its people, animals, forest and overall mauri to provide for present and future generations.

Summary

The ancestral lands of Ngāti Kea Ngāti Tuara surround our sacred maunga, Te Horohoroinga o ngā ringa o Kahumatamomoe and have been occupied by our hapū for over five hundred years. Our hapū have lived and travelled between Horohoro and Tihiotonga (from the Pukehangi area back to Mamaku, known as the Te Paiaka block) and our kaumatua tell stories of travelling and hunting in the area. Our environmental team has been working on Horohoro maunga since 2018 building our pest control capability and capacity within the hapū. Our hapū aspiration is to work towards restoring the mauri of the forest to maintain a healthy and functioning forest ecosystem.

Project Area and Location

1240ha land block on Horohoro Maunga and 180ha land block on Te Paiaka block.

Operational Work

- Long-tailed bat monitoring.
- Pest Control targeting: Possums, Rats, Mustelids, Wallabies, Deer and Pigs.
- Track Cutting and Marking: 1410ha area on Horohoro Maunga (including Tihiotonga area).
- Focused Rodent Control around identified bat maternity roosts.
- Education and Engagement: Support our hapū and local schools by hosting wananga and sharing knowledge of our maunga and taonga species.



3 kaimahi employed

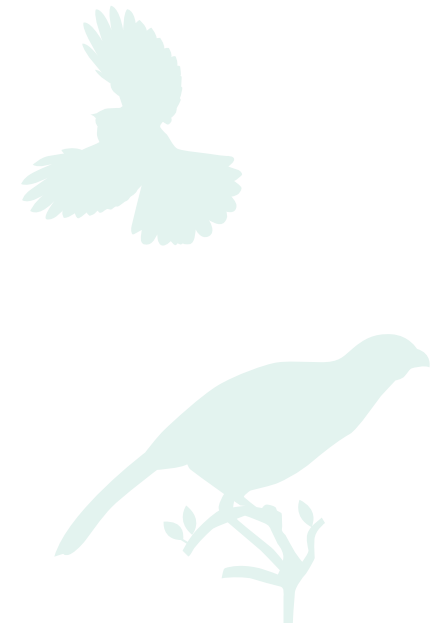
Project Highlight

Our project started operationally in March 2022 and by the end of June we had set up a 230 ha area on top of Horohoro maunga, with tracks cut and marked, bait stations and Goodnature A24 traps installed. This allowed us to run a control operation over spring, that saw a large cull of rats and some possums. This has been great motivation for our kaimahi and hapū to keep working towards implementing our trap and bait station network on the rest of the maunga.



For more information visit

www.ngatikeangatituara.com





Wairere Mahi

Iwi: Ngāti Hinerangi

“Mā te huruhuru ka rere te manu -
With its wings the bird is able to fly”.

Mā te huruhuru relates to the kaitaki, the mahi that they do revitalising and returning the ngāhere to it's natural state.

Ka rere te manu relates to the fact that without the kaitaki doing the mahi, the ngāhere being the manu cannot fly.

Summary

The project enabled whānau to return home to reconnect with the taiao, the whenua, their whanau and their iwi a Ngāti Hinerangi. When we add whakapapa, tikanga, mātauranga and te ao maori practices we are always confident in the fact our Mātua Tipuna (ancestors) will always be helping, protecting and guiding us on this journey. Tāne and his tamariki, the manu, ngārara pai (beneficial insects), ngā rākau (trees) all return to their natural state of being with minimal to no predators being

a threat to our whenua, ngāhere me ona taonga. We thrive to inspire and build capacity in our community to strengthen and empower relationships that will stand the test of time, and that we can be sure the future of this mahi stays strong for generations to come.

Location

This project is in the Western Ranges of the Kaimai Mamaku Forest Park between Wairere Falls and State Highway 29.

Operational Work

- Ground based pest control targeting rats, stoats, weasels, possums, deer and pigs over 1000 hectares with the best practical methods.



4 kaimahi employed



Project Highlights

- Completion of tohu mātauranga 3 in rural pest control, rural pest monitoring.
- Establishing the Te Whare Atawhai hut into our work area for kaimahi to stay in to aid the difficulty of highly intense terrain.
- Collaboration with all the other iwi, hapu involved in the kaimai projects has been highly beneficial to share knowledge and where possible resources. It is probably the most important relationships for us as Māori to help each other that we may all prosper now and tomorrow.
- Engagement and collaboration with community groups such as: Predator Free Matamata.
- Sharing our learnings and experiences with our Rangatahi.





Kaimai Kaponga

Iwi: Ngāti Tura / Ngāti Te Ngākau

Mauri Ora o te Ngahere, Ka ora te whenua, ka ora te tāngata

Summary

Kaimai Kaponga is an iwi-hapu collaboration led by Tura Ngāti Te Ngākau to restore the mauri of the ngahere in the southern Kaimai Mamaku Range. Funded by Jobs for Nature through the Department of Conservation and managed by Manaaki Kaimai Mamaku Trust, Kaimai Kaponga's conservation focus is on pest control, restoring the health of the forest, increasing community and tribal understanding about invertebrates, the water, fauna and undertaking monitoring. Te Ao Māori is incorporated in all aspects of our project including hiring of local tāngata, capability building of kaimahi, kotahitanga- working with our whanaunga across the Kaimai range, only doing work in ways that aligns with Te Ao Māori principles of kaitiakitanga of the whenua and ngahere.

Operational Work

- Progressive pest control for possums, rats, mice, cats, wallaby, pigs and deer across about 7,000 hectares of the southern Mamaku .
- Supporting the installation and maintenance of a bait station network for the Mokaihaha Ecological Reserve (across around 1000 ha)
- Supporting night shooting activities for wallaby on Mount Ngongotaha in collaboration with the Bay of Plenty Regional Council
- Invertebrate assessment in the ngahere of the Southern Mamaku – this has included the collection of 540 invertebrate samples and their analysis.
- Engaging with a wide range of community organisations which provide support and additional resources for the project's conservation activities.



12 kaimahi employed

- 9 Operational staff with ages ranging from 17-52 (with 2 team leaders)
- 1 FTE focused on monitoring, engagement, and communications
- 1 Operational manager
- 3 part time staff members as project advisors and administrator

Project Highlights

- Collection of our mauri stone from Waiorotoki (sacred site on the Waiteti Stream) as a blessing at the start of Kaimai Kaponga.
- Installation of 900 traps over 1,700 ha of land in the southern part of our area of interest.

- Over 750 pest animals trapped and removed from the ngahere.
- 12 Graduates from the Land Based Training, Level 3 Certificate in Rural Pest management and Monitoring.
- Track development, bait station network installation and pindone pulse addition in the Mokaihaha Ecological Reserve (500 bait stations).
- Characterisation of invertebrate communities in the Southern Mamaku and identification of over 150 taxonomic units. Sampling and identification of potentially rare and unique invertebrates from the ngahere.
- Engaged by the Bay of Plenty Regional Council to contribute to the North Island Wallaby Control programme on Mount Ngongotaha and the eradication of 120 wallabies.
- Supporting and connecting the hapū back to their tribal lands, building capability for long term management of tribal whenua, identification, and verification of sacred sites across the whenua, and restoring the relevance of these sites for the tribe's whakapapa and mana.
- Working with a diverse range of community groups, landowners and 5 iwi entities centred around the common kaupapa of restoring the mauri of the ngahere.





Kaimai Kauri

Iwi: Ngāti Te Wai /
Te Whanau a Tauwhao ki Otawhiwhi

Ko te kauri he whakaruruhau mō nga Iwi katoa
The kauri is a shelter for all people

Kia toitū te whenua
So that the land endures

Kia toitū te kauri
So that the kauri endures

Summary

Kaimai Kauri undertakes kauri ambassador work, kauri dieback monitoring and surveillance, and track maintenance within the Kaimai Range. Undertaking community trapping projects which are primarily based on existing DOC tracks to reduce the risk of any spread of kauri dieback into the Kaimai Ranges. This trapping program is primarily focused on reconnecting the community to the ngahere and increasing the social licence for wider pest control activities. This project will build capacity and capability in hapū to undertake

conservation mahi in their rohe, having been a long-held aspiration for their people.

Operational Work

- Preserving Tracks and DOC assets with regular upgrades and maintenance in partnership with DOC.
- Reducing the harmful effects of Phytophthora Agathidicida (PA)
- Reducing the spread of Phytophthora Agathidicida (PA)
- Protecting Kauri Trees with best practical methods.
- Incorporating Māori knowledge to manage kauri dieback disease.
- Pest Control Targeting: Possums, Rats, Mustelids.



6 kaimahi employed



Project Highlight

JFN has given our hapu crucial resourcing to support the development of capability and capacity to enable us as mana whenua to actively engage in environmental kaupapa and biodiversity management. 5 Full time positions and 3 part time positions which include formal training and matauranga knowledge passed down from kaumatua supports the delivery of conservation outcomes using cultural knowledge and western methodologies in partnership.





Ngā Mata Hiringa

Iwi: Ngāti Ranginui

Our intergenerational vision for the environment, within which we are located, is captured within the following whakatauki:

*Whatu ngarongaro te tangata,
toi tū te whenua
He taonga tuku iho mo nga uri whakatupu
Manaakitia, pupuritia mo ake tonu atu*

*Man disappears but the land remains as a
gifted treasure
Care for it and protect it
for future generations*

Summary

The operational work of Nga Mata Hiringa is broken into three main work areas:

1. Waitaia Lodge area;
2. Ngatuhua refugia area;
3. Ngatuhua wilding tree area.

We aim to increase biodiversity by restoring whakapapa species of rakau and manu in the Opuiaki and Ngamanawa area of the Kaimai Mamaku ranges. A reduction in toxins being placed on the whenua, such as feratox and pindone is an aspiration of Ngamanawa to align with our ability to increase the mauri of the ngahere. Consequently, we are trialling different methods to determine the best practical option for ground-based pest-control in our ngahere.

Operational Work

- Ground-based pest control targeting rats, possums, stoats, cats over an 180ha (Waitaia Lodge area) land block and 320ha (Ngatuhua Refugia Area) land block.
- Wilding Tree Control over 80ha (Ngatuhua wilding tree area) controlling wilding exotic plant species on PCL land targeting Cryptomeria, conifer, eucalyptus.
- Outcome Monitoring Water Quality, Tuna, Invertebrates, Kiwi, Kōkako, Pekapeka, Rongoa and Whakapapa Plant Species.
- Kauri Assessment: Utilising drones and photogrammetry mapping. Followed with visual inspections and identification by kaimahi on the ground.
- Collating operational data to a management system supported by MKMT.



6 kaimahi employed



Project Highlights

- Attending the Māori Biosecurity Symposium and The Māori Water Conference and seeing our kaimahi who hadn't been to events of this nature coming away empowered by the sharing of matauranga from other iwi and hapu that were involved in Te Ao Maori and conservation of the Taiao.
- Operational highlight has been testing our skills at luring possums and rats to traps to get kill counts on the board.

For more information visit

ngamanawa.com

youtu.be/NcQqzF60wXQ



Future Projects



He Ruinga Kōpura

Iwi: Tapuika

Tapuika is in stage one of their project with interest to complete ground-based pest control in Te Matai Forest located within Tapuika's traditional rohe boundary. Te Matai Forest is public conservation land (PCL) and joins two active conservation projects managed by Ōtanewainuku Kiwi Trust and the Kaharoa Kōkako Trust. Tapuika hope to collaborate with the Kōkako Ecosystem Expansion Project (KEEP) to establish an ecological corridor that will link the current conservation projects in Te Matai Forest and provide an ecological corridor to expand the habitat of kōkako.

Training and development for kaimahi has already started. Two kaimahi are currently completing the Bay Conservation Cadets – Tauira Mahi programme. This programme offers employment, training and development to upskill cadets in multiple areas and enable career pathways into the environmental sector.

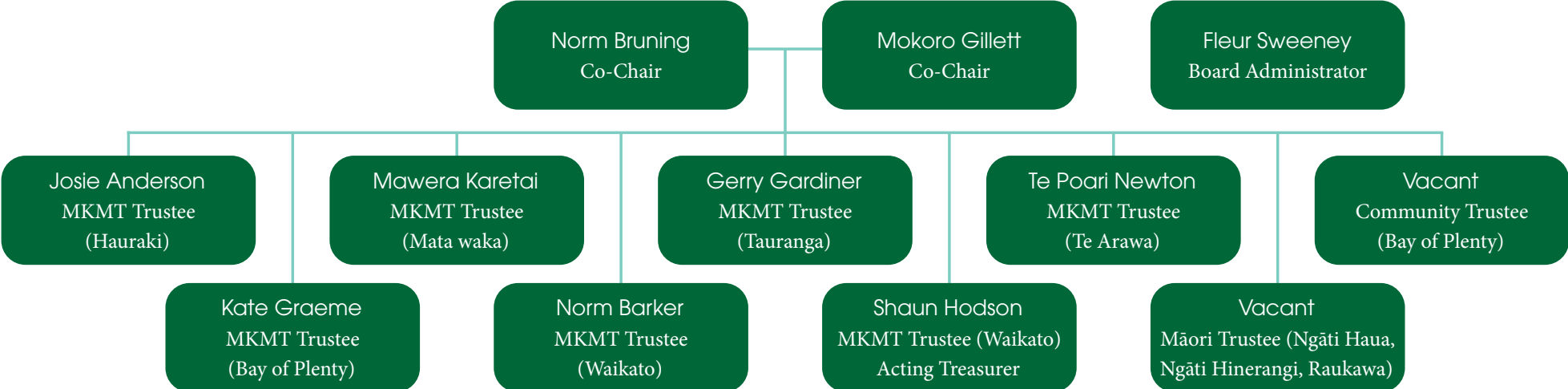




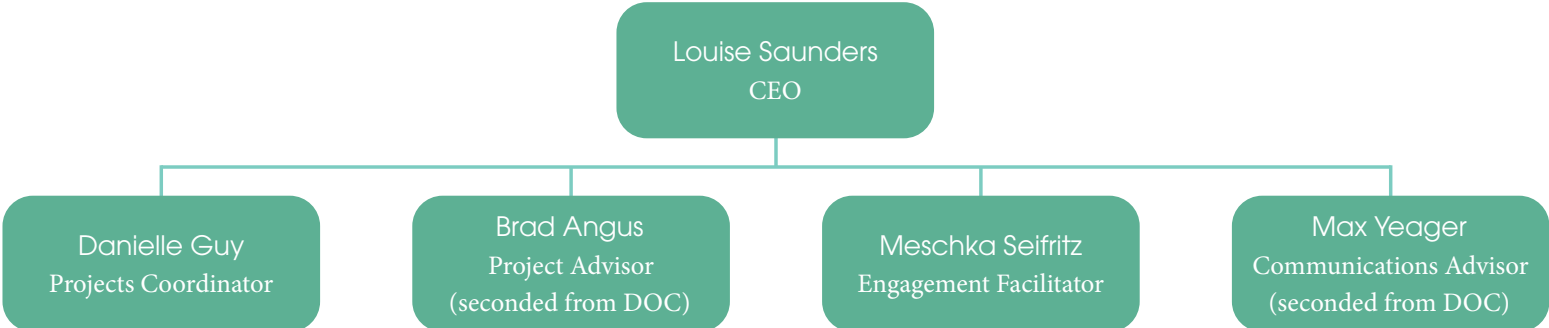
Our Team

Manaaki Kaimai Mamaku Trust Organisational Structure

Governance



Operations





Financials

Statement of Financial Performance

For the 12 months ended 30 June 2022

	\$	\$
	2022	2021
Revenue		
Grants, donations, fundraising and other similar revenue	1,698,416	63,130
Interest, dividends and other investment revenue	365	12
Total Revenue	1,698,781	63,142
Expenses		
Volunteer and employee related costs	178,563	13,167
Costs related to providing goods or service	1,355,821	-
Other expenses	163,892	49,963
Total Expenses	1,698,276	63,130
Surplus (Deficit)	505	12

Statement of Financial Position

As at 30 June 2022

	\$	\$
	30 Jun 2022	30 Jun 2021
Current Assets		
Bank accounts and cash	1,033,471	135,180
Debtors and prepayments	2,548,396	63,756
Other Current Assets	34	4
Total Current Assets	3,581,901	198,940
Non Current Assets		
Property, Plant & Equipment	700,626	-
Total Non-Current Assets	75,941	-
Total Assets	3,657,841	198,940
Current Liabilities		
Creditors and accrued expenses	3,597	58,007
Other current liabilities	8,679	3,752
Unused donations and grants with conditions	2,921,468	137,170
Total Current Liabilities	3,630,773	198,929
Net Assets	517	12

Notes to Financial Statements

- Grant funding is recognised when the conditions attached to the grant have been complied with. Where there are unfulfilled conditions attaching to the grant, the amount relating to the unfulfilled conditions are recognised as a liability and released to revenue as the conditions are fulfilled.
- All transactions in the Performance Report are reported using the accrual basis of accounting.
- These financial statements have been audited.



Our Supporters

Appreciation and gratitude to our funders and supporters who play such a pivotal role in helping the Trust progress its mission.





Connect with us



mkm.org.nz



kaimai-mamaku.org.nz



facebook.com/MKMamaku



instagram.com/manaakikaimaimamaku/



linkedin.com/company/manaaki-kaimai-mamaku-trust



info@mkm.org.nz

